

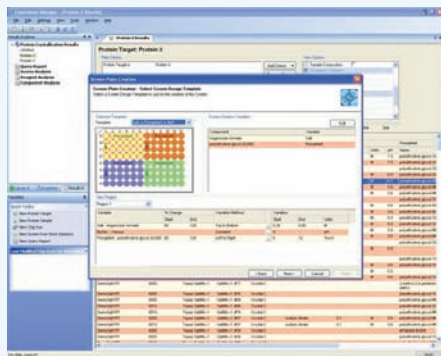


TOPAZ Database Suite

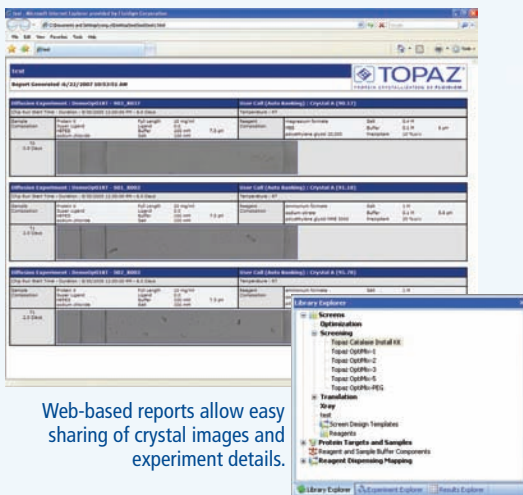
Experiment Manager TOPAZ® DATABASE SUITE



© Fluidigm Corporation. All rights reserved. Patents pending.



The Experiment Manager interface is used to manage information for the entire workflow.



Web-based reports allow easy sharing of crystal images and experiment details.

Tabs provide intuitive navigation through menus.

The **TOPAZ® Database Suite** — through the Experiment Manager™ interface — allows easy access to and management of information for the entire TOPAZ workflow: Setup of TOPAZ chips on the IFC controller, imaging and scoring on the AutoInspeX® II workstation, and scale-up into diffraction-quality crystals. The interface also supports data management of standard drop based experiments and enables sophisticated database querying. With the database suite, scientists can:

- ◆ Manage the complete workflow from creating screens to analyzing results
- ◆ Use commercial screens or design custom screens
- ◆ Easily produce web-based reports that include crystal images and experiment details

The Experiment Manager interface shows three tabs that organize the functions within the database:

Library Explorer

Library Explorer catalogs the information about crystallization trials, including details on stock solutions, reagents, screens, and samples. It also incorporates wizards and templates that allow scientists to perform routine tasks, quickly and easily, and to edit the library.

Experiment Explorer

Experiment Explorer provides information about individual chip experiments. It lets scientists view all of the relevant details about chip runs in one convenient place.

Results Explorer

Results Explorer uses custom queries and filters to reveal trends in the experimental results. Also, Results Explorer allows images from Crystal Vision™ software to be accessed and provides wizards for the design of follow-on experiments.

TOPAZ Database Suite

PARAMETER	SPECIFICATIONS
TOPAZ Database Processing Unit	CPU: Intel Pentium 4, 3.4 GHz or higher Memory: 2 GB or higher Hard Drive: 160GB or higher Operating System: Windows XP Optical Drive: 16X DVD \pm RW
Experiment Manager™	User interface to the database
Database Server	SQL-based server for the database
Database API	Interface between TOPAZ components
Database Manager	Data backups and automated reports

- ◆ **The TOPAZ System for Protein Crystallization**
- ◆ **Diffraction Capable Chips**
IFCs* designed for *in-situ* diffraction of crystals.
- ◆ **Screening Chips**
High-performance IFCs for protein crystallization screening.
- ◆ **IFC Controller**
Software/hardware for automating experiment setup on TOPAZ IFCs.
- ◆ **AutoInspeX® II Workstation**
Software/hardware for automated experiment analysis on TOPAZ IFCs.
- ◆ **TOPAZ Database Suite**
Software for managing crystallization data and reporting.
- ◆ **OptiMix™ Reagents**
Reagents optimized for free interface diffusion on TOPAZ IFCs.
* Integrated Fluidic Circuits



fluidigm® 

Corporate Headquarters

Fluidigm Corporation
7000 Shoreline Court, Suite 100
South San Francisco, CA 94080 USA
Toll-free: 1.866.FLUIDLINE
Fax: 650.871.7152
www.fluidigm.com

Sales

North America
650.266.6170 | topaz@fluidigm.com
Europe/EMEA
+31 20 578 8853 | topazeurope@fluidigm.com
Japan/Korea
+81 3 3555 2351 | topazasia@fluidigm.com
Asia
+65 9431 3790 | topazasia@fluidigm.com

© Fluidigm Corporation. All rights reserved.

Fluidigm, the Fluidigm logo, TOPAZ, AutoInspeX, Crystal Vision, Experiment Manager, NanoFlex, OptiMix, and FLUIDLINE are trademarks or registered trademarks of Fluidigm Corporation in the U.S. and/or other countries. All other trademarks are the property of their respective owners.

FOR RESEARCH USE ONLY.

MRKT00090d