

# Anti-Human CD196-141Pr

Catalog: 3141003A

Clone: G034E3

Package Size: 50 tests

Isotype: IgG2b

Storage: Store product at 4°C. Do not freeze.

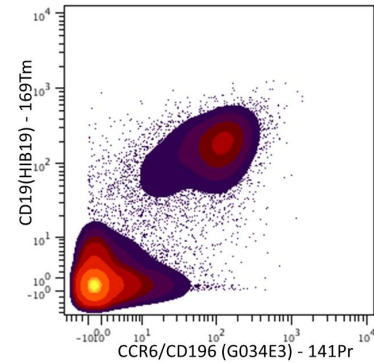
Formulation: Antibody stabilizer with 0.05% Sodium Azide

Reactivity: Cynomolgus Monkey, Rhesus,

## Technical Information

**Validation:** Each lot of conjugated antibody is quality control tested by CyTOF® analysis of stained cells using the appropriate positive and negative cell staining and/or activation controls.

**Recommended Usage:** The suggested use is 1 µl for up to 3 X 10<sup>6</sup> live cells in 100 µl. It is recommended that the antibody be titrated for optimal performance for each of the desired applications.



Human PBMCs stained with 169Tm-anti-CD19 (HIB19) and 141Pr-anti-CCR6/CD196 (G034E3). CD45+ CD33- cells are displayed in the analysis.

## Description

CD196, also known as CCR6 (CC-chemokine receptor type 6), is expressed on immature dendritic cells, B lymphocytes, and memory T cells. CCR6 positive cells, and its ligand CCL20, have been detected in numerous organs, especially the secondary lymphoid organ. It can mediate the arrest of T cells and has been reported to be highly expressed on T cells resident in both normal and psoriatic skin. CCR6 and/or CCL20 have also been implicated in the pathogenesis of various inflammatory autoimmune diseases, playing a role in the recruitment of Th17 cells.

## References

Bandura, D. R., et al. Mass Cytometry: Technique for Real Time Single Cell Multitarget Immunoassay Based on Inductively Coupled Plasma Time-of-Flight Mass Spectrometry. *Analytical Chemistry* 81:6813-6822, 2009.

Ornatsky, O. I., et al. **Highly Multiparametric Analysis by Mass Cytometry.** *J Immunol Methods* 361 (1-2):1-20, 2010.

### For technical support visit [fluidigm.com/support](http://fluidigm.com/support)

**North America** +1 650 266 6100 | Toll-free: +1 866 358 4354 in the US | [support.northamerica@fluidigm.com](mailto:support.northamerica@fluidigm.com) **Europe** +33 1 60 92 42 40 | [support.europe@fluidigm.com](mailto:support.europe@fluidigm.com)

**China (excluding Hong Kong)** +86 21 3255 8368 | [techsupportchina@fluidigm.com](mailto:techsupportchina@fluidigm.com) **Japan** +81 3 3662 2150 | [techsupportjapan@fluidigm.com](mailto:techsupportjapan@fluidigm.com)

**All other Asian countries** +1 650 266 6100 | [techsupportasia@fluidigm.com](mailto:techsupportasia@fluidigm.com) **Central and South America** +1 650 266 6100 | [techsupportlatam@fluidigm.com](mailto:techsupportlatam@fluidigm.com)

### For Research Use Only. Not for use in diagnostic procedures.

This product contains antibodies manufactured by and sold under license from BioLegend and licensees thereof.

Information in this publication is subject to change without notice. **Safety data sheet information** [fluidigm.com/sds](http://fluidigm.com/sds) **Patent and license information** [fluidigm.com/legalnotices](http://fluidigm.com/legalnotices) | Fluidigm, the Fluidigm logo, and CyTOF are trademarks or registered trademarks of Fluidigm Corporation in the United States and/or other countries. © 2015 Fluidigm Corporation. All rights reserved. 07/2015