

## Anti-Human CD11a-142Nd

**Catalog #:** 3142006B

**Package Size:** 100 tests

**Storage:** Store product at 4°C. Do not freeze.

**Cross Reactivity:** Chimpanzee, Olive Baboon, Capuchin Monkey, Rabbit, Bovine, Canine, Ovine, Equine

**Clone:** HI111

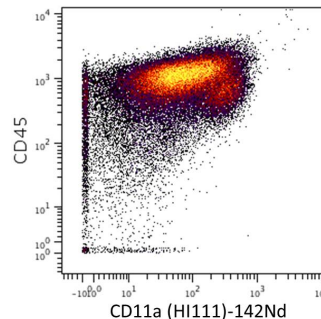
**Isotype:** Mouse IgG1

**Formulation:** Antibody stabilizer with 0.05% Sodium Azide

### Technical Information

**Validation:** Each lot of conjugated antibody is quality control tested by CyTOF<sup>®</sup> analysis of stained cells using the appropriate positive and negative cell staining and/or activation controls.

**Recommended Usage:** The suggested use is 1 µl for up to 3 X 10<sup>6</sup> live cells in 100 µl. It is recommended that the antibody be titrated for optimal performance for each of the desired applications.



Human PBMCs stained with <sup>154</sup>Sm-anti-CD45 (HI30) and <sup>142</sup>Nd-anti-CD11a (HI111).

### Description

CD11a, also known as LFA-1 $\alpha$ , is a 170-180 kDa type I transmembrane glycoprotein that associates with CD18 to form LFA-1. LFA-1 interacts primarily with intracellular adhesion molecule-1 (ICAM-1) but also interacts with ICAM-2, ICAM-3 as well as JAM-1. CD11a plays a critical role in the architecture of the immunological synapse, the optimal activation of T cells as well as in leukocyte trafficking. While CD11a has primarily been characterized on T cells, it is expressed on multiple hematopoietic lineages including B cells, and may play a role in antigen presentation. CD11a is expressed at higher levels on memory T cells compared to naive T cells and likely affects the ability of memory T cells to scan immune targets and form immunological synapses.

### References

Bandura, D. R., et al. Mass Cytometry: Technique for Real Time Single Cell Multitarget Immunoassay Based on Inductively Coupled Plasma Time-of-Flight Mass Spectrometry. *Analytical Chemistry* 81:6813-6822, 2009.

Newell, E.W., et al. Cytometry by Time-of-Flight Shows Combinatorial Cytokine Expression and Virus-Specific Cell Niches within a Continuum of CD8<sup>+</sup> T Cell Phenotypes. *Immunity* 36 January 2012: 142-152.

Ornatsky, O. I., et al. Highly multiparametric analysis by mass cytometry. *J Immunol Methods* 361 (1-2):1-20, 2010.

### Contact Information:

Sales: [sales@DVSsciences.com](mailto:sales@DVSsciences.com) | Support: [support@DVSsciences.com](mailto:support@DVSsciences.com)  
[www.DVSsciences.com](http://www.DVSsciences.com) | For assistance by phone: 855-DVS-CYTO

This product is intended for Research Use Only. This product is not intended for therapeutic or diagnostic purposes in humans or animals.  
This product contains antibodies manufactured by and sold under license from BioLegend and licensees thereof.

© 2011 DVS Sciences Inc. The trademarks mentioned herein are the property of DVS Sciences Inc. or their respective owners. DVS Sciences Inc. products are warranted to meet stated product specifications and to conform to label descriptions when used and stored properly. Unless otherwise stated, this warranty is limited to 6 months from date of sale for products used, handled and stored according to DVS Sciences, Inc. instructions. DVS Sciences, Inc. sole liability for the product is limited to replacement of the product or refund of the purchase price. Product may not be resold, modified for resale or used to manufacture commercial products without prior written approval from DVS Sciences Inc.

