

# Anti-Human FcεRI-150Nd

Catalog: 3150027B

Package Size: 100 tests

Storage: Store product at 4°C. Do not freeze.

Reactivity: Human

Clone: AER-37 (CRA-1)

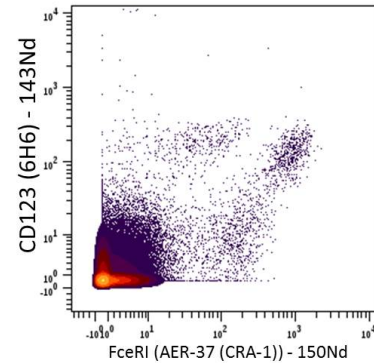
Isotype: Mouse IgG2b

Formulation: Antibody stabilizer with 0.05% Sodium Azide

## Technical Information

**Validation:** Each lot of conjugated antibody is quality control tested by CyTOF® analysis of stained cells using the appropriate positive and negative cell staining and/or activation controls.

**Recommended Usage:** The suggested use is 1 µl for up to 3 X 10<sup>6</sup> live cells in 100 µl. It is recommended that the antibody be titrated for optimal performance for each of the desired applications.



Human PBMCs stained with 143Nd-anti-CD123 (6H6) and 150Nd-anti-FcεRI (AER-37 (CRA-1)). Total viable cells are displayed in the analysis.

## Description

This antibody recognizes the human high affinity Fc receptor for IgE (Fc epsilon RI), which plays a key role in the IgE-mediated allergic immune response. FcεRI is a tetramer composed of one alpha, one beta, and two gamma subunits. The AER-37 monoclonal antibody reacts with the FcεRIα subunit, an IgE-binding subunit lacking signal-transducing ability. FcεRIα is primarily found on mast cells and basophils and is upregulated by the presence of IgE.

## References

Bandura, D. R., et al. Mass Cytometry: Technique for Real Time Single Cell Multitarget Immunoassay Based on Inductively Coupled Plasma Time-of-Flight Mass Spectrometry. *Analytical Chemistry* 81:6813-6822, 2009.

Ornatsky, O. I., et al. Highly Multiparametric Analysis by Mass Cytometry. *J Immunol Methods* 361 (1-2):1-20, 2010.

## For technical support visit [fluidigm.com/support](http://fluidigm.com/support)

**North America** +1 650 266 6100 | Toll-free: +1 866 358 4354 in the US | [support.northamerica@fluidigm.com](mailto:support.northamerica@fluidigm.com) **Europe** +33 1 60 92 42 40 | [support.europe@fluidigm.com](mailto:support.europe@fluidigm.com)

**China (excluding Hong Kong)** +86 21 3255 8368 | [techsupportchina@fluidigm.com](mailto:techsupportchina@fluidigm.com) **Japan** +81 3 3662 2150 | [techsupportjapan@fluidigm.com](mailto:techsupportjapan@fluidigm.com)

**All other Asian countries** +1 650 266 6100 | [techsupportasia@fluidigm.com](mailto:techsupportasia@fluidigm.com) **Central and South America** +1 650 266 6100 | [techsupportlatam@fluidigm.com](mailto:techsupportlatam@fluidigm.com)

## For Research Use Only. Not for use in diagnostic procedures.

This product contains antibodies manufactured by and sold under license from BioLegend and licensees thereof.

Information in this publication is subject to change without notice. **Safety data sheet information** [fluidigm.com/sds](http://fluidigm.com/sds) **Patent and license information** [fluidigm.com/legalnotices](http://fluidigm.com/legalnotices) | Fluidigm, the Fluidigm logo, and CyTOF are trademarks or registered trademarks of Fluidigm Corporation in the United States and/or other countries. © 2015 Fluidigm Corporation. All rights reserved. 07/2015