

# Anti-Mouse CD206-169Tm

Catalog: 3169021B

Package Size: 100 tests

Storage: Store product at 4°C. Do not freeze.

Reactivity: Mouse,

Clone: C068C2

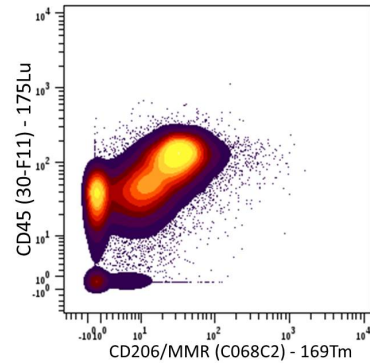
Isotype: Rat IgG2a

Formulation: Antibody stabilizer with 0.05% Sodium Azide

## Technical Information

**Validation:** Each lot of conjugated antibody is quality control tested by CyTOF<sup>®</sup> analysis of stained cells using the appropriate positive and negative cell staining and/or activation controls.

**Recommended Usage:** The suggested use is 1 µl for up to 3 X 10<sup>6</sup> live cells in 100 µl. It is recommended that the antibody be titrated for optimal performance for each of the desired applications.



Mouse J774A.1 macrophage cells were fixed, permeabilized, and stained with 175Lu-anti-CD45 (30-F11) and 169Tm-anti-CD206/MMR (C068C2). Total viable cells are displayed in the analysis.

## Description

CD206 is a 162-175 kDa mannose receptor C-type lectin cell surface protein that belongs to a family of C-type lectin receptors (CLRs). CLRs are crucial in recognition of complex glycan structures on various pathogens and have evolved to facilitate the endocytosis and presentation of pathogens. CD206 contains 8 C-type lectin-like domains (CTLD) and acts as a phagocytic receptor for bacteria, fungi and other pathogens. CTLD4, 5, and -7 are required for high affinity binding and endocytosis of multivalent glycoconjugates. CD206 plays an essential role in host defense and provides a link between innate and adaptive immunity.

## References

Bandura, D. R., et al. Mass Cytometry: Technique for Real Time Single Cell Multitarget Immunoassay Based on Inductively Coupled Plasma Time-of-Flight Mass Spectrometry. *Analytical Chemistry* 81:6813-6822, 2009.

Ornatsky, O. I., et al. **Highly Multiparametric Analysis by Mass Cytometry.** *J Immunol Methods* 361 (1-2):1-20, 2010.

### For technical support visit [fluidigm.com/support](http://fluidigm.com/support)

**North America** +1 650 266 6100 | Toll-free: +1 866 358 4354 in the US | [support.northamerica@fluidigm.com](mailto:support.northamerica@fluidigm.com) **Europe** +33 1 60 92 42 40 | [support.europe@fluidigm.com](mailto:support.europe@fluidigm.com)

**China (excluding Hong Kong)** +86 21 3255 8368 | [techsupportchina@fluidigm.com](mailto:techsupportchina@fluidigm.com) **Japan** +81 3 3662 2150 | [techsupportjapan@fluidigm.com](mailto:techsupportjapan@fluidigm.com)

**All other Asian countries** +1 650 266 6100 | [techsupportasia@fluidigm.com](mailto:techsupportasia@fluidigm.com) **Central and South America** +1 650 266 6100 | [techsupportlatam@fluidigm.com](mailto:techsupportlatam@fluidigm.com)

### For Research Use Only. Not for use in diagnostic procedures.

This product contains antibodies manufactured by and sold under license from BioLegend and licensees thereof.

Information in this publication is subject to change without notice. **Safety data sheet information** [fluidigm.com/sds](http://fluidigm.com/sds) **Patent and license information** [fluidigm.com/legalnotices](http://fluidigm.com/legalnotices) | Fluidigm, the Fluidigm logo, and CyTOF are trademarks or registered trademarks of Fluidigm Corporation in the United States and/or other countries. © 2015 Fluidigm Corporation. All rights reserved. 07/2015