

Anti-E-Cadherin-158Gd

Pathologist-Verified Clone for Imaging Mass Cytometry

Catalog: 3158029D

Package size and concentration: 25 µg, 0.5 mg/mL

Storage: Store at 4 °C. Do not freeze.

Reactivity: Mouse, Human, Bovine, Cross

Clone: 24E10

Isotype: Rabbit IgG

Formulation: Antibody stabilizer with 0.05% sodium azide

Application: IMC paraffin, IMC frozen

Technical Information

Application: The metal-tagged antibody is designed and formulated for the application of Imaging Mass Cytometry™ (IMC™) using the Fluidigm Hyperion™ Imaging System on formalin-fixed, paraffin-embedded (FFPE) and frozen tissue sections.

Quality control: Each lot of conjugated antibody is quality control-tested by Imaging Mass Cytometry on tissue sections.

Recommended concentration: For optimal performance it is recommended that the antibody be titrated for the desired application. Suggested initial dilution range:

IMC paraffin: 1:25 to 1:100

IMC frozen: 1:100 to 1:400

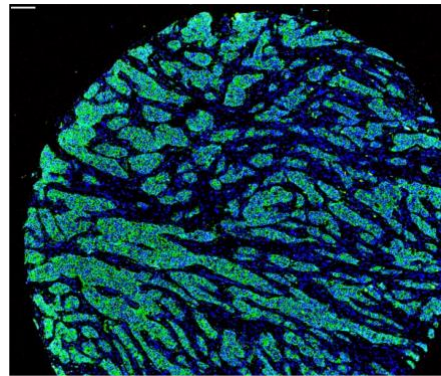
Description

CD324, also known as epithelial cadherin (E-cadherin) or uvomorulin, is a member of the cadherin superfamily. E-cadherin is a calcium-dependent, transmembrane cell-cell adhesion glycoprotein composed of four extracellular cadherin repeats and a highly conserved cytoplasmic tail region. It functions as a cell adhesion molecule involved in development, bacterial pathogenesis, and tumor invasion. E-cadherin is widely expressed in epithelial cells in the colon, uterus, liver, keratinocytes, brain, heart, muscle, kidney, and pancreas as well as in erythroid cells.

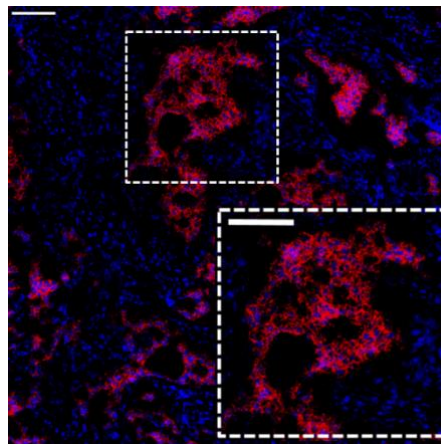
References

Chang, Q. et al. "Staining of frozen and formalin-fixed, paraffin-embedded tissues with metal-labeled antibodies for Imaging Mass Cytometry analysis." *Current Protocols in Cytometry* 82 (2017): 12.47.1–12.47.8.

Giesen, C. et al. "Highly multiplexed imaging of tumor tissues with subcellular resolution by mass cytometry." *Nature Methods* 11 (2014): 417–22.



Human breast carcinoma (FFPE) stained with 158Gd-anti-E-cadherin (24E10) at a dilution of 1:50 (green pseudocolor) and iridium DNA intercalator (blue pseudocolor). Heat-mediated antigen retrieval was performed using Tris/EDTA buffer pH 9. Scale bar size = 100 µm.



Human frozen breast tumor stained with 158Gd-anti-E-cadherin (24E10) at a dilution of 1:200 (red pseudocolor) and iridium DNA intercalator (blue pseudocolor). Tissue section was fixed in 4% paraformaldehyde for 30 minutes at 4 °C. Scale bar size = 100 µm.

For technical support visit techsupport.fluidigm.com. | For general support visit fluidigm.com/support.

For Research Use Only. Not for use in diagnostic procedures.

This product contains antibodies manufactured by and sold under license from CST™ and licensees thereof.

Information in this publication is subject to change without notice. **Safety data sheet information:** fluidigm.com/sds. **Patent and license**

information: fluidigm.com/legal/notices. **Limited Use Label License:** The purchase of this Fluidigm Instrument and/or Consumable product conveys to the purchaser the limited, nontransferable right to use with only Fluidigm Consumables and/or Instruments respectively except as approved in writing by Fluidigm. **Trademarks:** Fluidigm, the Fluidigm logo, Hyperion, Imaging Mass Cytometry, and IMC are trademarks and/or registered trademarks of Fluidigm Corporation in the United States and/or other countries. All other trademarks are the sole property of their respective owners. © 2019 Fluidigm Corporation. All rights reserved. 11/2019