

Anti-Human CD162-167Er

Catalog: 3167014B

Package Size: 100 tests

Storage: Store product at 4°C. Do not freeze.

Reactivity: Cynomolgus Monkey, Human

Clone: KPL- 1

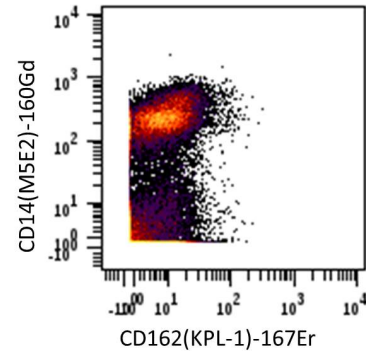
Isotype: IgG1

Formulation: Antibody stabilizer with 0.05% Sodium Azide

Technical Information

Validation: Each lot of conjugated antibody is quality control tested by CyTOF[®] analysis of stained cells using the appropriate positive and negative cell staining and/or activation controls.

Recommended Usage: The suggested use is 1 µl for up to 3 X 10⁶ live cells in 100 µl. It is recommended that the antibody be titrated for optimal performance for each of the desired applications.



Human PBMCs stained with 167Er-anti-CD162(KPL-1) and 160Gd-anti-CD14(M5E2). Total viable cells are displayed in the analysis.

Description

The KPL-1 monoclonal antibody reacts specifically CD162, a 120 - 220 kD, mucin-like type I transmembrane glycoprotein. CD162 is also known as p-selectin glycoprotein ligand-1 (PSGL-1). CD162 binds 3 of the selectin proteins including CD62P (P-Selectin), CD62E (E-Selectin) and CD62L (L-Selectin). CD162 has broad expression across lymphocytes and is expressed on neutrophils and monocytes. CD162 has been reported to mediate rolling of leukocytes on activated endothelium and be involved in the interaction between leukocytes and activated platelets at inflammatory sites.

References

Bandura, D. R., et al. Mass Cytometry: Technique for Real Time Single Cell Multitarget Immunoassay Based on Inductively Coupled Plasma Time-of-Flight Mass Spectrometry. *Analytical Chemistry* 81:6813-6822, 2009.

Ornatsky, O. I., et al. **Highly Multiparametric Analysis by Mass Cytometry.** *J Immunol Methods* 361 (1-2):1-20, 2010.

For technical support visit fluidigm.com/support

EMAIL **United States and other countries not in Europe or Asia** techsupport@fluidigm.com **Europe** techsupporteurope@fluidigm.com | **Asia** techsupportasia@fluidigm.com
 PHONE **United States (toll-free)** +1 866 358 4354 | **Europe** +33 1 60 92 42 40 | **Japan** +81 3 3662 2150 | **China** +86 21 3255 8368 | **All other countries** +1 650 266 6100

For Research Use Only. Not for use in diagnostic procedures.

This product contains antibodies manufactured by and sold under license from BioLegend and licensees thereof.

Information in this publication is subject to change without notice. **Safety data sheet information** fluidigm.com/sds **Patent and license information** fluidigm.com/legalnotices | Fluidigm, the Fluidigm logo, and CyTOF are trademarks or registered trademarks of Fluidigm Corporation in the United States and/or other countries. © 2015 Fluidigm Corporation. All rights reserved. 01/2015