

Anti-Human CD169-158Gd

Catalog: 3158027B

Package size: 100 tests

Storage: Store product at 4 °C. Do not freeze.

Clone: 7-239

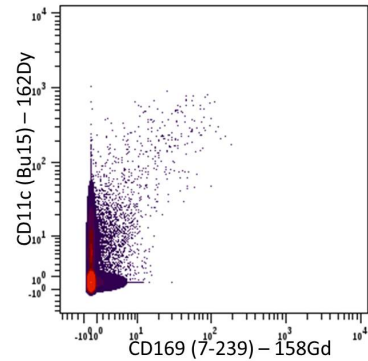
Isotype: Mouse IgG1

Formulation: Antibody stabilizer with 0.05% sodium azide

Technical Information

Validation: Each lot of conjugated antibody is quality control-tested by CyTOF[®] analysis of stained cells using the appropriate positive and negative cell staining and/or activation controls.

Recommended usage: The suggested use is 1 µL for up to 3 × 10⁶ live cells in 100 µL. It is recommended that the antibody be titrated for optimal performance for each of the desired applications.



Human PBMCs were incubated for 3 days with IFN γ and TNF α and then stained with 162Dy-anti-CD11c (Bu15) and 158Gd-anti-CD169 (7-239).

Description

CD169, also known as sialoadhesin (Sn), sheep erythrocyte receptor (SER) or Siglec-1, is a type I transmembrane glycoprotein containing a single Ig-like V-type domain and 16 Ig-like C2-type domains. CD169 binds a number of sialylated molecules including the mannose receptor, MGL1, MUC1, PSGL-1 and different glycoforms of CD43. CD169 is expressed on macrophages and dendritic cells in peripheral blood, lymph nodes and spleen in humans. By its affinity to α 2, 3-linked sialic acid, it is involved in macrophage binding to different cell types such as granulocytes, monocytes and NK, B and T cells.

References

Bandura, D. R., et al. Mass Cytometry: Technique for Real Time Single Cell Multitarget Immunoassay Based on Inductively Coupled Plasma Time-of-Flight Mass Spectrometry. *Analytical Chemistry* 81 (2009): 6,813–22.

Ornatsky, O. I., et al. Highly Multiparametric Analysis by Mass Cytometry. *Journal of Immunological Methods* 361 (2010): 1–20.

For technical support visit fluidigm.com/support.

North America +1 650 266 6100 | Toll-free: +1 866 358 4354 in the US | support.northamerica@fluidigm.com **Europe** +33 1 60 92 42 40 | support.europe@fluidigm.com
China (excluding Hong Kong) +86 21 3255 8368 | techsupportchina@fluidigm.com **Japan** +81 3 3662 2150 | techsupportjapan@fluidigm.com
All other Asian countries +1 650 266 6100 | techsupportasia@fluidigm.com **Central and South America** +1 650 266 6100 | techsupportlatam@fluidigm.com

For Research Use Only. Not for use in diagnostic procedures.

This product contains antibodies manufactured by and sold under license from BioLegend[®] and licensees thereof.

Information in this publication is subject to change without notice. **Safety data sheet information** www.fluidigm.com/sds **Patent and license information** www.fluidigm.com/legalnotices | Fluidigm, the Fluidigm logo, and CyTOF are trademarks or registered trademarks of Fluidigm Corporation in the United States and/or other countries. © 2016 Fluidigm Corporation. All rights reserved. 10/2016