

# Anti-Human CD196/CCR6-176Yb

Catalog: 3176022A

Clone: G034E3

Package size: 50 tests

Isotype: Mouse IgG2b

Storage: Store product at 4 °C. Do not freeze.

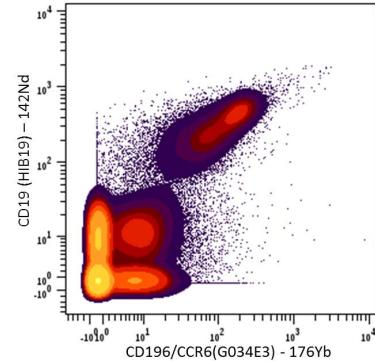
Formulation: Antibody stabilizer with 0.05% sodium azide

Cross-reactivity: Cynomolgus Monkey, Rhesus

## Technical Information

**Validation:** Each lot of conjugated antibody is quality control-tested by CyTOF<sup>®</sup> analysis of stained cells using the appropriate positive and negative cell staining and/or activation controls.

**Recommended usage:** The suggested use is 1 µL for up to 3 × 10<sup>6</sup> live cells in 100 µL. It is recommended that the antibody be titrated for optimal performance for each of the desired applications.



Human PBMCs stained with 142Nd-anti-CD19 (HIB19) and 176Yb-anti-CCR6 (G034E3). CD45<sup>+</sup> CD33<sup>-</sup> cells are displayed in the analysis.

## Description

CD196, also known as CC-chemokine receptor type 6 (CCR6), is expressed on immature dendritic cells, B lymphocytes and memory T cells. CCR6-positive cells and CCR6 ligand CCL20 have been detected in numerous organs, especially the secondary lymphoid organ. It can mediate the arrest of T cells and has been reported to be highly expressed on T cells resident in both normal and psoriatic skin. CCR6 and/or CCL20 have also been implicated in the pathogenesis of various inflammatory autoimmune diseases, playing a role in the recruitment of Th17 cells.

## References

Bandura, D. R., et al. Mass Cytometry: Technique for Real Time Single Cell Multitarget Immunoassay Based on Inductively Coupled Plasma Time-of-Flight Mass Spectrometry. *Analytical Chemistry* 81 (2009): 6,813–22.

Ornatsky, O. I., et al. Highly Multiparametric Analysis by Mass Cytometry. *Journal of Immunological Methods* 361 (2010): 1–20.

**For technical support visit [fluidigm.com/support](http://fluidigm.com/support).**

**North America** +1 650 266 6100 | Toll-free: +1 866 358 4354 in the US | [support.northamerica@fluidigm.com](mailto:support.northamerica@fluidigm.com) **Europe** +33 1 60 92 42 40 | [support.europe@fluidigm.com](mailto:support.europe@fluidigm.com)  
**China (excluding Hong Kong)** +86 21 3255 8368 | [techsupportchina@fluidigm.com](mailto:techsupportchina@fluidigm.com) **Japan** +81 3 3662 2150 | [techsupportjapan@fluidigm.com](mailto:techsupportjapan@fluidigm.com)  
**All other Asian countries** +1 650 266 6100 | [techsupportasia@fluidigm.com](mailto:techsupportasia@fluidigm.com) **Central and South America** +1 650 266 6100 | [techsupportlatam@fluidigm.com](mailto:techsupportlatam@fluidigm.com)

**For Research Use Only. Not for use in diagnostic procedures.**

This product contains antibodies manufactured by and sold under license from BioLegend<sup>®</sup> and licensees thereof.

Information in this publication is subject to change without notice. **Safety data sheet information** [www.fluidigm.com/sds](http://www.fluidigm.com/sds) **Patent and license information** [www.fluidigm.com/legalnotices](http://www.fluidigm.com/legalnotices) | Fluidigm, the Fluidigm logo, and CyTOF are trademarks or registered trademarks of Fluidigm Corporation in the United States and/or other countries. © 2016 Fluidigm Corporation. All rights reserved. 10/2016