

Anti-Human Ig lambda-151Eu

Catalog: 3151004B

Clone: MHL-38

Package Size: 100 tests

Isotype: Mouse IgG2a

Storage: Store product at 4°C. Do not freeze.

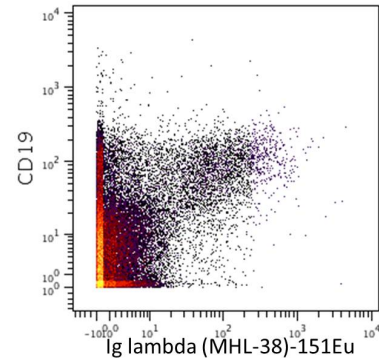
Formulation: Antibody stabilizer with 0.05% Sodium Azide

Reactivity: Human,

Technical Information

Validation: Each lot of conjugated antibody is quality control tested by CyTOF® analysis of stained cells using the appropriate positive and negative cell staining and/or activation controls.

Recommended Usage: The suggested use is 1 µl for up to 3 X 10⁶ live cells in 100 µl. It is recommended that the antibody be titrated for optimal performance for each of the desired applications.



Human PBMCs stained with ¹⁴²Nd-anti-CD19 (HIB19) and ¹⁵¹Eu-anti- Ig lambda (MHL-38). Lymphocytes are displayed in the analysis.

Description

There are two types of light chain in humans (as in other mammals), kappa (κ) chain and lambda (λ) chain. Antibodies produced by mature B lymphocytes express only one class of light chain. The MHL-38 antibody reacts with both soluble and membrane human immunoglobulin light chain lambda (λ). It does not react with human immunoglobulin light chain kappa (κ) or heavy chain (μ). The MHL-38 antibody can be used as primary or secondary reagent for CyTOF® staining.

References

Bandura, D. R., et al. Mass Cytometry: Technique for Real Time Single Cell Multitarget Immunoassay Based on Inductively Coupled Plasma Time-of-Flight Mass Spectrometry. *Analytical Chemistry* 81:6813-6822, 2009.

Ornatsky, O. I., et al. **Highly Multiparametric Analysis by Mass Cytometry.** *J Immunol Methods* 361 (1-2):1-20, 2010.

For technical support visit fluidigm.com/support

North America +1 650 266 6100 | Toll-free: +1 866 358 4354 in the US | support.northamerica@fluidigm.com **Europe** +33 1 60 92 42 40 | support.europe@fluidigm.com

China (excluding Hong Kong) +86 21 3255 8368 | techsupportchina@fluidigm.com **Japan** +81 3 3662 2150 | techsupportjapan@fluidigm.com

All other Asian countries +1 650 266 6100 | techsupportasia@fluidigm.com **Central and South America** +1 650 266 6100 | techsupportlatam@fluidigm.com

For Research Use Only. Not for use in diagnostic procedures.

This product contains antibodies manufactured by and sold under license from BioLegend and licensees thereof.

Information in this publication is subject to change without notice. **Safety data sheet information** fluidigm.com/sds **Patent and license information** fluidigm.com/legalnotices | Fluidigm, the Fluidigm logo, and CyTOF are trademarks or registered trademarks of Fluidigm Corporation in the United States and/or other countries. © 2015 Fluidigm Corporation. All rights reserved. 07/2015