

# Anti-Human IL-1RI-166Er

Catalog: 3166022B

Package Size: 100 tests

Storage: Store product at 4°C. Do not freeze.

Reactivity: Human

Clone: Polyclonal

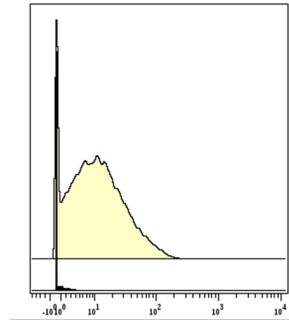
Isotype: Goat IgG

Formulation: Antibody stabilizer with 0.05% Sodium Azide

## Technical Information

**Validation:** Each lot of conjugated antibody is quality control tested by CyTOF<sup>®</sup> analysis of stained cells using the appropriate positive and negative cell staining and/or activation controls.

**Recommended Usage:** The suggested use is 1 µl for up to 3 X 10<sup>6</sup> live cells in 100 µl. It is recommended that the antibody be titrated for optimal performance for each of the desired applications.



IL-1RI (Polyclonal) – 166Er

Human HepG2 cells (top) and human Jurkat cells (bottom) stained with 166Er-anti-IL-1RI (Polyclonal). Total viable cells are displayed in analysis.

## Description

Both IL-1 $\alpha$  and IL-1 $\beta$  transduce signals by binding to the 80 kDa plasma membrane receptor IL-1 receptor type I (IL-1RI). The binding facilitates the interaction with IL-1 receptor accessory protein, which together induce downstream signaling pathways. IL-1RI is expressed predominantly by T cells, fibroblasts and endothelial cells. The second IL-1 receptor type II, also binds IL-1, but it lacks the intracellular domain and cannot transduce signals and is considered a decoy receptor. Both receptors are members of the immunoglobulin superfamily.

## References

Bandura, D. R., et al. Mass Cytometry: Technique for Real Time Single Cell Multitarget Immunoassay Based on Inductively Coupled Plasma Time-of-Flight Mass Spectrometry. *Analytical Chemistry* 81:6813-6822, 2009.

Ornatsky, O. I., et al. Highly Multiparametric Analysis by Mass Cytometry. *J Immunol Methods* 361 (1-2):1-20, 2010.

## For technical support visit [fluidigm.com/support](http://fluidigm.com/support)

**North America** +1 650 266 6100 | Toll-free: +1 866 358 4354 in the US | [support.northamerica@fluidigm.com](mailto:support.northamerica@fluidigm.com) **Europe** +33 1 60 92 42 40 | [support.europe@fluidigm.com](mailto:support.europe@fluidigm.com)

**China (excluding Hong Kong)** +86 21 3255 8368 | [techsupportchina@fluidigm.com](mailto:techsupportchina@fluidigm.com) **Japan** +81 3 3662 2150 | [techsupportjapan@fluidigm.com](mailto:techsupportjapan@fluidigm.com)

**All other Asian countries** +1 650 266 6100 | [techsupportasia@fluidigm.com](mailto:techsupportasia@fluidigm.com) **Central and South America** +1 650 266 6100 | [techsupportlatam@fluidigm.com](mailto:techsupportlatam@fluidigm.com)

## For Research Use Only. Not for use in diagnostic procedures.

Information in this publication is subject to change without notice. **Safety data sheet information** [fluidigm.com/sds](http://fluidigm.com/sds) **Patent and license information** [fluidigm.com/legalnotices](http://fluidigm.com/legalnotices) | Fluidigm, the Fluidigm logo, and CyTOF are trademarks or registered trademarks of Fluidigm Corporation in the United States and/or other countries. © 2015 Fluidigm Corporation. All rights reserved. 07/2015