

Anti-Human/Mouse ROR γ -168Er

Catalog: 3168018B

Clone: 600214

Package size: 100 tests

Isotype: Mouse IgG2b

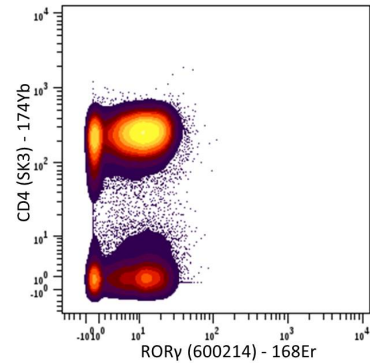
Storage: Store product at 4 °C. Do not freeze.

Formulation: Antibody stabilizer with 0.05% sodium azide

Technical Information

Validation: Each lot of conjugated antibody is quality control-tested by CyTOF[®] analysis of stained cells using the appropriate positive and negative cell staining and/or activation controls.

Recommended usage: The suggested use is 1 μ L for up to 3×10^6 live cells in 100 μ L. It is recommended that the antibody be titrated for optimal performance for each of the desired applications.



Human PBMCs were fixed, permeabilized and stained with 174Yb-anti-CD4 (SK3) and 168Er-anti-ROR γ (600214). CD3⁺ cells are displayed in the analysis.

Description

ROR γ (retinoid-related orphan receptor gamma), also known as RORC and NR1F3, is a member of the nuclear hormone receptor family, NR1 subfamily. It is a DNA binding transcription factor and plays a critical role in control of apoptosis during thymopoiesis and T cell homeostasis. ROR γ has two splice forms, γ 1 and γ 2 (also referred to as ROR γ t). ROR γ 1 is highly expressed in thymus, kidney, liver, muscle and brown fat but not in white fat tissue. ROR γ t is expressed specifically in cells of the lymphoid compartment, namely CD4⁺CD8⁺ "double-positive" thymocytes, Th17 cells of the periphery and lymphoid tissue inducer (LTI) cells of lymphoid organs.

References

Bandura, D. R., et al. Mass Cytometry: Technique for Real Time Single Cell Multitarget Immunoassay Based on Inductively Coupled Plasma Time-of-Flight Mass Spectrometry. *Analytical Chemistry* 81 (2009): 6,813–22.

Ornatsky, O. I., et al. Highly Multiparametric Analysis by Mass Cytometry. *Journal of Immunological Methods* 361 (2010): 1–20.

For technical support visit fluidigm.com/support.

North America +1 650 266 6100 | Toll-free: +1 866 358 4354 in the US | support.northamerica@fluidigm.com **Europe** +33 1 60 92 42 40 | support.europe@fluidigm.com
China (excluding Hong Kong) +86 21 3255 8368 | techsupportchina@fluidigm.com **Japan** +81 3 3662 2150 | techsupportjapan@fluidigm.com
All other Asian countries +1 650 266 6100 | techsupportasia@fluidigm.com **Central and South America** +1 650 266 6100 | techsupportlatam@fluidigm.com

For Research Use Only. Not for use in diagnostic procedures.