

Anti-Mouse CD169/Siglec-1-170Er

Catalog: 3170018B

Package size: 100 tests

Storage: Store product at 4 °C. Do not freeze.

Clone: 3D6.112

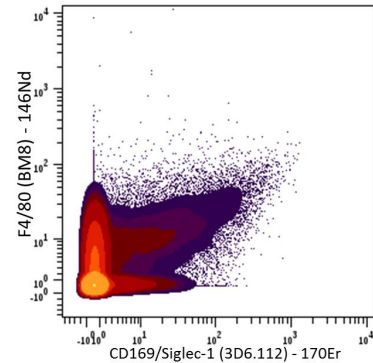
Isotype: Rat IgG2a

Formulation: Antibody stabilizer with 0.05% sodium azide

Technical Information

Validation: Each lot of conjugated antibody is quality control-tested by CyTOF[®] analysis of stained cells using the appropriate positive and negative cell staining and/or activation controls.

Recommended usage: The suggested use is 1 µL for up to 3 x 10⁶ live cells in 100 µL. It is recommended that the antibody be titrated for optimal performance for each of the desired applications.



Mouse bone marrow stained with 146Nd-anti-F4/80 (BM8) and 170Er-anti-CD169/Siglec-1 (3D6.112). Total viable cells are displayed in the analysis.

Description

CD169, also known as Siglec-1 and sialoadhesin (Sn), is a 175–185 kDa type I lectin containing 17 immunoglobulin (Ig) domains (one variable domain and 16 constant domains). Acting as a macrophage-restricted cell surface receptor, CD169 preferentially binds to alpha 2,3-linked sialic acid residues and is expressed on stromal macrophages in many tissues, particularly in lymph nodes and bone marrow, and on marginal metallophilic macrophages in the spleen. CD169 mediates sialic acid-dependent binding of macrophages to granulocytes, monocytes, NK cells, B cells and T cells.

References

Bandura, D. R., et al. Mass Cytometry: Technique for Real Time Single Cell Multitarget Immunoassay Based on Inductively Coupled Plasma Time-of-Flight Mass Spectrometry. *Analytical Chemistry* 81 (2009): 6,813–22.

Ornatsky, O. I., et al. Highly Multiparametric Analysis by Mass Cytometry. *Journal of Immunological Methods* 361 (2010): 1–20.

For technical support visit fluidigm.com/support.

North America +1 650 266 6100 | Toll-free: +1 866 358 4354 in the US | support.northamerica@fluidigm.com **Europe** +33 1 60 92 42 40 | support.europe@fluidigm.com
China (excluding Hong Kong) +86 21 3255 8368 | techsupportchina@fluidigm.com **Japan** +81 3 3662 2150 | techsupportjapan@fluidigm.com
All other Asian countries +1 650 266 6100 | techsupportasia@fluidigm.com **Central and South America** +1 650 266 6100 | techsupportlatam@fluidigm.com

For Research Use Only. Not for use in diagnostic procedures.

This product contains antibodies manufactured by and sold under license from BioLegend[®] and licensees thereof.

Information in this publication is subject to change without notice. **Safety data sheet information** www.fluidigm.com/sds **Patent and license information** www.fluidigm.com/legalnotices | Fluidigm, the Fluidigm logo, and CyTOF are trademarks or registered trademarks of Fluidigm Corporation in the United States and/or other countries. © 2016 Fluidigm Corporation. All rights reserved.
 11/2016