

## Anti-Mouse Ly-6C-150Nd

**Catalog #:** 3150010B

**Package Size:** 100 tests

**Storage:** Store product at 4°C. Do not freeze.

**Cross Reactivity:** Mouse

**Clone:** HK1.4

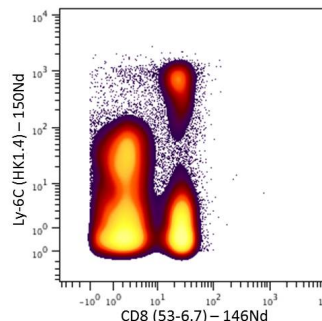
**Isotype:** Rat IgG2c

**Formulation:** Antibody stabilizer with 0.05% Sodium Azide

### Technical Information

**Validation:** Each lot of conjugated antibody is quality control tested by CyTOF® analysis of stained cells using the appropriate positive and negative cell staining and/or activation controls.

**Recommended Usage:** The suggested use is 1 µl for up to 3 X 10<sup>6</sup> live cells in 100 µl. It is recommended that the antibody be titrated for optimal performance for each of the desired applications.



Mouse splenocytes stained with 150Nd-anti-Ly-6C (HK1.4) and 146Nd-anti-CD8 (53-6.7). T lymphocytes are displayed in the analysis.

### Description

Ly-6C is a 14-17 kDa GPI-linked cell surface glycoprotein that is widely used to identify functionally discrete murine circulating monocyte populations. Ly-6Chi monocytes are recruited early to inflammatory environments and thought to be proinflammatory, whereas Ly-6Cl<sup>o</sup> monocytes are a more patrolling cell type and can replenish resident tissue macrophages. In addition to monocytes/macrophages, Ly-6C is also expressed by endothelial cells, neutrophils and some T cell subsets. Ly-6C been reported to be an indicator of memory CD8+ T cells.

### References

Bandura, D. R., et al. Mass Cytometry: Technique for Real Time Single Cell Multitarget Immunoassay Based on Inductively Coupled Plasma Time-of-Flight Mass Spectrometry. *Analytical Chemistry* 81:6813-6822, 2009.

Ornatsky, O. I., et al. Highly multiparametric analysis by mass cytometry. *J Immunol Methods* 361 (1-2):1-20, 2010.

### Contact Information:

Sales: [sales@DVSsciences.com](mailto:sales@DVSsciences.com) | Support: [support@DVSsciences.com](mailto:support@DVSsciences.com)  
[www.DVSsciences.com](http://www.DVSsciences.com) | For assistance by phone: 855-DVS-CYTO

This product is intended for Research Use Only. This product is not intended for therapeutic or diagnostic purposes in humans or animals.  
This product contains antibodies manufactured by and sold under license from BioLegend and licensees thereof.

© 2011 DVS Sciences Inc. The trademarks mentioned herein are the property of DVS Sciences Inc. or their respective owners. DVS Sciences Inc. products are warranted to meet stated product specifications and to conform to label descriptions when used and stored properly. Unless otherwise stated, this warranty is limited to 6 months from date of sales for products used, handled and stored according to DVS Sciences, Inc. instructions. DVS Sciences, Inc. sole liability for the product is limited to replacement of the product or refund of the purchase price. Product may not be resold, modified for resale or used to manufacture commercial products without prior written approval from DVS Sciences Inc.

