

Anti-Mouse TCR γ/δ -159Tb

Catalog #: 3159012B

Package Size: 100 tests

Storage: Store product at 4°C. Do not freeze.

Cross Reactivity: Mouse

Clone: GL3

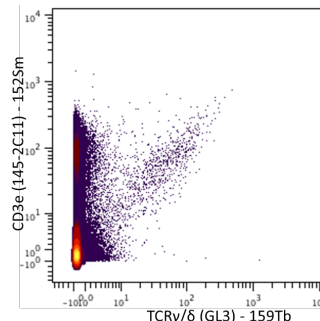
Isotype: Hamster IgG

Formulation: Antibody stabilizer with 0.05% Sodium Azide

Technical Information

Validation: Each lot of conjugated antibody is quality control tested by CyTOF[®] analysis of stained cells using the appropriate positive and negative cell staining and/or activation controls.

Recommended Usage: The suggested use is 1 μ l for up to 3×10^6 live cells in 100 μ l. It is recommended that the antibody be titrated for optimal performance for each of the desired applications.



C57BL/6 mouse splenocytes stained with 152Sm-anti-CD3e (145-2C11) and 159Tb-anti-TCR γ/δ (GL3).

Description

$\gamma\delta$ T cells are a minor population of T cells that express the TCR $\gamma\delta$ chains. In the murine thymus, commitment to the $\gamma\delta$ lineage occurs at the immature CD4⁻ CD8⁻ double-negative (DN) stage of thymocyte development. Early DN cells with potential to develop as either $\gamma\delta$ or $\alpha\beta$ T cells rearrange their T-cell receptor- γ (TCR- γ), TCR- δ and TCR- β loci in an attempt to generate a productive TCR- $\gamma\delta$ or pre-TCR (TCR- β paired with the invariant pre-TCR- α chain) that compete to drive $\gamma\delta$ or $\alpha\beta$ T-cell development, respectively. $\gamma\delta$ T cells are present in the thymus, epidermis, epithelial lining of the intestine, peritoneal cavity, and lymphoid tissues.

References

Bandura, D. R., et al. Mass Cytometry: Technique for Real Time Single Cell Multitarget Immunoassay Based on Inductively Coupled Plasma Time-of-Flight Mass Spectrometry. *Analytical Chemistry* 81:6813-6822, 2009.

Ornatsky, O. I., et al. Highly multiparametric analysis by mass cytometry. *J Immunol Methods* 361 (1-2):1-20, 2010.

Contact Information:

Sales: sales@DVSsciences.com | Support: support@DVSsciences.com
www.DVSsciences.com | For assistance by phone: 855-DVS-CYTO

This product is intended for Research Use Only. This product is not intended for therapeutic or diagnostic purposes in humans or animals.
This product contains antibodies manufactured by and sold under license from BioLegend and licensees thereof.

© 2011 DVS Sciences Inc. The trademarks mentioned herein are the property of DVS Sciences Inc. or their respective owners. DVS Sciences Inc. products are warranted to meet stated product specifications and to conform to label descriptions when used and stored properly. Unless otherwise stated, this warranty is limited to 6 months from date of sale for products used, handled and stored according to DVS Sciences, Inc. instructions. DVS Sciences, Inc. sole liability for the product is limited to replacement of the product or refund of the purchase price. Product may not be resold, modified for resale or used to manufacture commercial products without prior written approval from DVS Sciences Inc.

