

Anti-Human CD163/M130-147Sm

Pathologist-Verified Clone for Imaging Mass Cytometry

Catalog: 3147021D

Package size and concentration: 25 µg, 0.5 mg/mL

Storage: Store at 4 °C. Do not freeze.

Reactivity: Human

Clone: EDHu-1

Isotype: Mouse IgG1

Formulation: Antibody stabilizer with 0.05% sodium azide

Application: IMC paraffin, IMC frozen

Technical Information

Application: The metal-tagged antibody is designed and formulated for the application of Imaging Mass Cytometry™ (IMC™) using the Fluidigm Hyperion™ Imaging System on formalin-fixed, paraffin-embedded (FFPE) and frozen tissue sections.

Quality control: Each lot of conjugated antibody is quality control-tested by Imaging Mass Cytometry on tissue sections.

Recommended concentration: For optimal performance it is recommended that the antibody be titrated for the desired application. Suggested initial dilution range:

IMC paraffin: 1:50 to 1:200

IMC frozen: 1:50 to 1:200

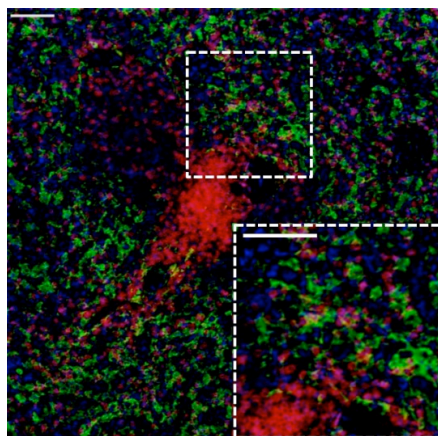
Description

CD163, also known as M130, Ber-Mac3, Ki-M8, or SM4, is a 130–140 kDa glycoprotein belonging to the group B scavenger receptor cysteine-rich superfamily. CD163 is restricted in its expression to the monocytic/macrophage lineage. It is present on all circulating monocytes and most tissue macrophages except those found in the mantle zone and germinal centers of lymphoid follicles, interdigitating reticulum cells, and Langerhans cells. CD163 binds to haptoglobin-hemoglobin complex and TWEAK and plays a role in clearing hemoglobin and regulating cytokine production by macrophages.

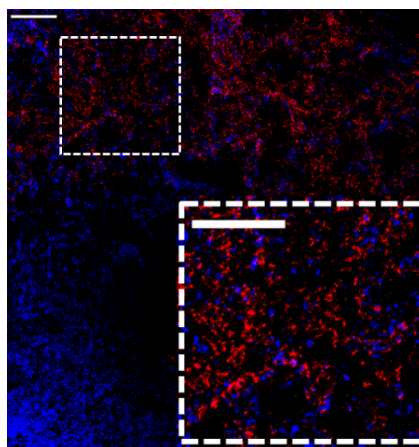
References

Chang, Q. et al. "Staining of frozen and formalin-fixed, paraffin-embedded tissues with metal-labeled antibodies for Imaging Mass Cytometry analysis." *Current Protocols in Cytometry* 82 (2017): 12.47.1–12.47.8.

Giesen, C. et al. "Highly multiplexed imaging of tumor tissues with subcellular resolution by mass cytometry." *Nature Methods* 11 (2014): 417–22.



Human spleen (FFPE) stained with 147Sm-anti-CD163 (EDHu-1) at a dilution of 1:100 (green pseudocolor), 170Er-anti-CD3 (poly) (red pseudocolor), and iridium DNA intercalator (blue pseudocolor). Heat-mediated antigen retrieval was performed using Tris/EDTA buffer pH 9. Scale bar size = 100 µm.



Human frozen spleen stained with 147Sm-anti-CD163 (EDHu-1) at a dilution of 1:100 (red pseudocolor) and iridium DNA intercalator (blue pseudocolor). Tissue section was fixed in 4% paraformaldehyde for 30 minutes at 4 °C. Scale bar size = 100 µm.

For technical support visit techsupport.fluidigm.com. | For general support visit fluidigm.com/support.

For Research Use Only. Not for use in diagnostic procedures.

Information in this publication is subject to change without notice. **Safety data sheet information:** fluidigm.com/sds. **Patent and license information:** fluidigm.com/legal/notices. **Limited Use Label License:** The purchase of this Fluidigm Instrument and/or Consumable product conveys to the purchaser the limited, nontransferable right to use with only Fluidigm Consumables and/or Instruments respectively except as approved in writing by Fluidigm. **Trademarks:** Fluidigm, the Fluidigm logo, Hyperion, Imaging Mass Cytometry, and IMC are trademarks and/or registered trademarks of Fluidigm Corporation in the United States and/or other countries. All other trademarks are the sole property of their respective owners. © 2019 Fluidigm Corporation. All rights reserved. 11/2019